

# Geolite Silt **kerakoll**

The new mineral,  
lightweight  
geo-mortar/finishing  
product for concrete  
reconstruction  
and finishing.



# Geolite Silt: the new mouldable, lightweight and versatile geo-mortar/ finishing product.

## Unparalleled workability

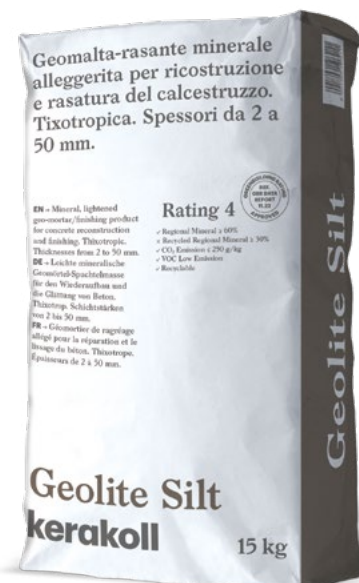
Geolite Silt combines the typical workability of geo-mortars with the softness and malleability of a new generation of lightweight finishing products.

Soft, fluid and thixotropic, it is easy to apply even in thicknesses up to 50 mm per single coat.

## Ideal for non-structural repairs

Its light, thixotropic mix enables non-structural reconstructive repairs to be carried out safely using a high ductility geo-mortar capable of absorbing stress and allow for movements in the structure. Thanks to its resilience and tenacity characteristics, it ensures the monolithic reconstruction of the concrete surface in a defect-free and long-lasting manner.

- Thixotropic, class R2
- Semi-rapid setting 30 min
- High coverage and workability
- Thicknesses from 2 to 50 mm in a single coat
- Paintable after 4 hours



# Geolite Silt: ideal for rebuilding, finishing and protecting the facade.

## **Universal, multi-purpose**

Geolite Silt is ideal for rebuilding decorative elements of any size and shape such as frames, window sills, parapets; for adjusting and filling of superficial defects such as construction joints, honeycombs, holes; and for protective and aesthetic finishing of large concrete surfaces as well.

## **Lightweight and with high coverage**

Its high coverage makes the geo-mortar perfect for building sites with complex logistics, allowing easier work and saving 20% to 30% of material handling compared to traditional R2-class non-structural repair mortars.





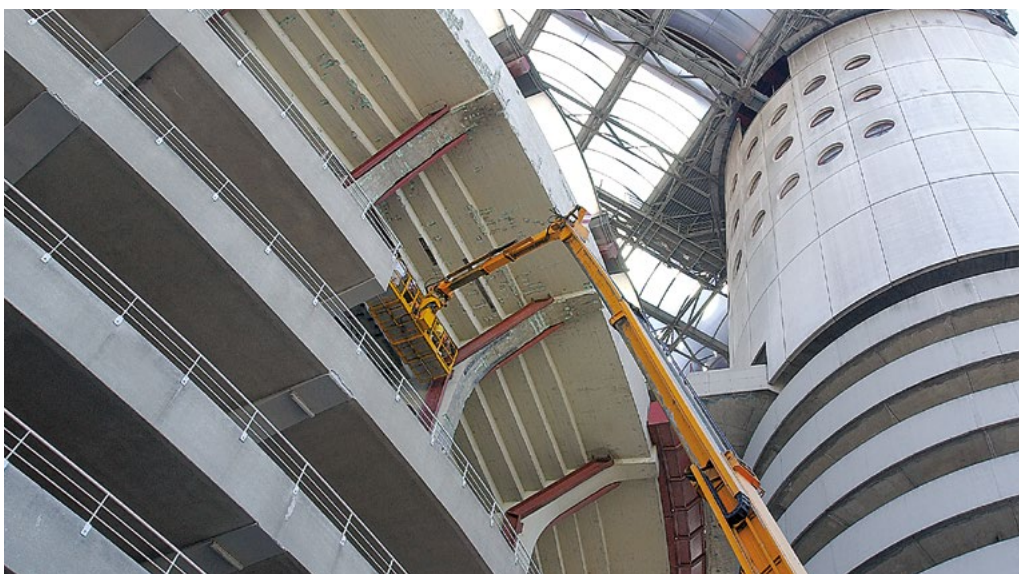


# Geolite, the geo-mortar range for monolithic concrete repair.

The technical and performance limits of standard cement- and chemical-additive-based mortars and the complex layered systems used to repair concrete are a thing of the past, now that Geolite, the ground-breaking, eco-friendly, mineral geo-mortar, can passivate, repair, finish and protect deteriorated concrete in one go. Result: naturally stable repairs that blend in with the concrete to form a monolithic element with a durability akin to mineral rock.

The Geolite range offers a complete and specific range of products to repair, rebuild and strengthen concrete and reinforced concrete:

- **thixotropic geo-mortars**
- **fluid geo-mortars**
- **complementary products**







Geolite



Geolite 40



Geolite Silt



Geolite Magma



Geolite Magma Xenon



Geolite Microsilicato



# Thixotropic geo-mortars

## Geolite

Thixotropic geo-mortar for restoring, repairing, finishing and protecting structures in reinforced concrete, anchoring and fixing metal elements. Specific for general repair.

- Thixotropic, class R4
- Normal setting: 80 min.
- Applicable by hand and machine
- Inorganic mineral matrix in certified Geosteel SRG systems



## Geolite 10

Thixotropic geo-mortar for restoring, repairing, finishing and protecting structures in reinforced concrete, anchoring and fixing metal elements. Specific for operations involving mobile platforms, low temperatures and where the result must be ready for use quickly.

- Thixotropic, class R4
- Rapid setting 10 min
- Water-resistant
- Paintable after 4 hours



## Geolite 40

Thixotropic geo-mortar for restoring, repairing, finishing and protecting structures in reinforced concrete, anchoring and fixing metal elements. Specific for operations involving mobile platforms, low temperatures and where the result must be ready for use quickly.

- Thixotropic, class R4
- Semi-rapid setting 40 min
- Water-resistant
- Paintable after 4 hours



## Geolite Silt

Mineral, lightened geo-mortar/finishing product for concrete reconstruction and finishing. Thixotropic, thicknesses between 2 and 50 mm.

- Thixotropic, class R2
- Semi-rapid setting 30 min
- High coverage and workability
- Thicknesses from 2 to 50 mm in a single coat
- Paintable after 4 hours





# Fluid geo-mortars

## Geolite Magma

Pourable, multipurpose geo-mortar for restoring, repairing and consolidating structures in reinforced concrete with a swelling effect for anchoring and fixing metal elements.

- Pourable, multipurpose, class R4
- Normal setting: 60 min.
- Inorganic mineral matrix in certified Geosteel SRG and Geolite FRC systems



## Geolite Magma 20

Pourable geo-mortar for restoring, repairing and consolidating structures in reinforced concrete with a swelling effect for anchoring and fixing metal elements. Specific for operations at low temperatures and when quick use is needed.

- Pourable for grouting, class R4
- Rapid setting 20 min
- Early foot traffic



## Geolite Magma Xenon

When combined with Steel Fiber it forms a certified, fibre-reinforced, pourable geo-mortar with high ductility for restoring, repairing and consolidating reinforced concrete structures.

- C.V.T. certified, pourable FRC system
- High workability
- It does not need additional rebars
- Thicknesses from minimum 15 mm



## Geolite Asfalto

Ideal geo-mortar for applications that must be ready for use quickly, such as repairs of industrial and airport flooring, pavements and to anchor and fix traps and drains, manholes, fences, sign posts, safety barriers.

- Semi-thixotropic, class R4
- Rapid setting 20 min
- Specific for road and street furniture works
- Can withstand foot and vehicle traffic just 2 hours after application
- Black colour



# Substrate preparation coat

## Geolite Base

Preparation coat for horizontal concrete surfaces.

- Regulates water absorption and promotes proper crystallisation of the geo-mortar
- Suitable even at low temperatures
- Ideal for application with roller or spray gun



# Structural gel

## Geolite Gel

Two-component, epoxy thixotropic gel system for anchoring and fixing metal elements. Organic mineral matrix in combination with steel sheets in certified Geosteel SRP structural strengthening systems.

- Certified for moist impregnation of Geosteel G sheets
- High workability even at high temperatures
- Excellent adhesion to any substrate
- High glass-transition temperature  $T_g$



# Decorative geo-paint

## Geolite Microsilicato

Filling, "mottled" effect geo-paint for monolithic protection of new or repaired concrete against carbonation. Resistant to atmospheric agents, algae and mould.

- Anti-carbonation monolithic covering
- Breathable
- Protects and regenerates concrete surfaces with fine-grain finishing
- Can be applied after 4 hours on repairs carried out with Geolite 10 or Geolite 40 geo-mortars







