

Aquastop 70

140 mm non-woven polypropylene tape with high-adhesion, alkali-resistant waterproof treatment for perimeter joints to be applied with Aquastop Nanoflex® and Aquastop Flex.



Aquastop 70 seals perimeter joints quickly guaranteeing waterproofing and durability over time.



PRODUCT STRENGTHS

- Excellent elasticity
- High breathability
- Perfectly applicable using suitable eco-friendly adhesives of the Biogel®, Aquastop Fix and Aquastop Nanoflex® range



AREAS OF USE

Use

Balconies, terraces and horizontal external surfaces that are small in size and with no expansion and fractionizing joints in the screed.

INSTRUCTIONS FOR USE

Preparation of substrates

In general, substrates must be free of dust, oil and grease, dry and free from moisture rising, with loose debris or flaky parts such as residues of cement, lime and paint coatings, which must be completely removed.

Application

- 1 Apply Aquastop Nanoflex® to an area about 10 cm wide near joints, on the floor and on the wall.
- 2 Place Aquastop 70 on the wet, freshly applied gel membrane along the floor-wall joint.
- 3 Press firmly and smooth over to ensure Aquastop 70 adheres perfectly, being careful not to wrinkle it.
- 4 When laying the second coat of Aquastop Nanoflex®, carefully cover the vertical part of Aquastop 70 attached to the wall.



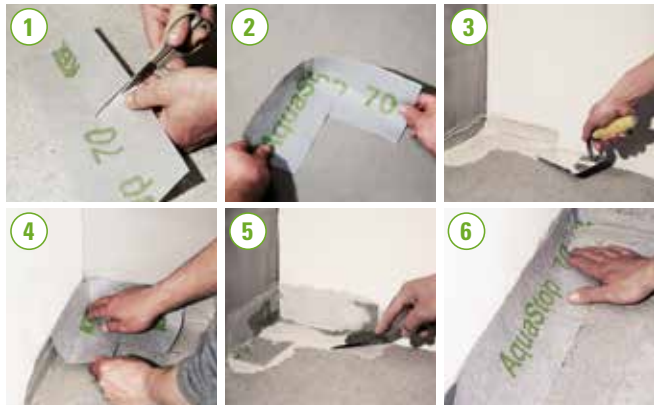
Take all specific steps to create and apply internal and external corners.

* ÉMISSION DANS L'AIR INTÉRIEUR Information sur le niveau d'émission de substances volatiles dans l'air intérieur, présentant un risque de toxicité par inhalation, sur une échelle de classe allant de A+ (très faibles émissions) à C (fortes émissions).

INSTRUCTIONS FOR USE

Internal corner

- 1 Cut a 40 cm strip of Aquastop 70 and cut halfway into it about halfway along the strip.
- 2 Fold the strip in half to create an internal corner and two overlapping edges.
- 3 Apply Aquastop Nanoflex® to an area about 10 cm wide in the corner, on the floor and on the wall.
- 4 Stick the special piece to the wet, freshly applied gel membrane.
- 5 Press firmly and smooth over to ensure Aquastop 70 adheres perfectly, avoiding the formation of any wrinkles.
- 6 When waterproofing the wall-floor joint, lay about 10 cm Aquastop 70 over the special piece.



External corner

- 1 Cut a 40 cm strip of Aquastop 70 and cut halfway into it about halfway along the strip.
- 2 Fold the strip in half to create an external corner, folding out the edges.
- 3 Apply Aquastop Nanoflex® to an area about 10 cm wide in the corner, on the floor and on the wall, and stick the special piece to the wet, freshly applied gel membrane. Press firmly and smooth over to ensure Aquastop 70 adheres perfectly, being careful not to wrinkle it.
- 4 Cut a 14 cm strip of Aquastop 70 and cut a 7x7 cm square from it.
- 5 Stick the cut piece to the fresh gel membrane, joining the special piece laid previously.
- 6 Press firmly and smooth over to ensure the piece adheres perfectly, being careful not to wrinkle it.



When waterproofing the wall-floor joint, lay about 10 cm Aquastop 70 over the special piece.

ABSTRACT

Supply and installation of non-woven, alkali-resistant waterproof polypropylene tape with high adhesion, such as AquaStop 70 made by Kerakoll Spa. Secure the tapes using single-component waterproof gel membrane, EC 1 R rated for its low emissions of volatile organic compounds, such as Aquastop Nanoflex® Eco for floors and walls. Press firmly and smooth over to ensure the tape adheres perfectly, being careful not to wrinkle it. To ensure the water-resistance of internal and external corners, make special pieces of tape to fix with the waterproofing product.

TECHNICAL DATA COMPLIANT WITH KERAKOLL QUALITY STANDARD

Appearance	non-woven polypropylene
Colour	grey
Roll width	≈ 140 mm
Roll length	≈ 50 m
Total thickness	≈ 0.37 mm
Weight	≈ 9.8 g/m

PERFORMANCE

VOC INDOOR AIR QUALITY (IAQ) - VOLATILE ORGANIC COMPOUND EMISSIONS

Conformity	EC 1 plus GEV-Emicode	GEV certified 9024/11.01.02
------------	-----------------------	-----------------------------

HIGH-TECH

Longitudinal breaking load	140 N / 5 cm	EN 12311-1
Transversal breaking load	95 N / 5 cm	EN 12311-1
Longitudinal ultimate elongation	≈ 65%	EN 12311-1
Transversal ultimate elongation	≈ 65%	EN 12311-1

WARNING

- **Product for professional use**
- abide by any standards and national regulations
- store away from direct sunlight
- once laid, protect from the sunlight
- for any other issues, contact the Kerakoll Worldwide Global Service - info@kerakoll.ae

The Eco and Bio classifications refer to the GreenBuilding Rating® Manual 2012. This information was last updated in November 2018; please note that additions and/or amendments may be made over time by KERAKOLL SpA; for the latest version, see www.kerakoll.com. KERAKOLL SpA shall therefore be liable for the validity, accuracy and updating of information provided only when taken directly from its institutional website. The technical data sheet given here is based on our technical and practical knowledge. As it is not possible for us to directly check the conditions in your building yards and the execution of the work, this information represents general indications that do not bind Kerakoll in any way. Therefore, it is advisable to perform a preliminary test to verify the suitability of the product for your purposes.